

More Consistent Heat, Even Longer Life

APEX 570 TRUCKMOUNT

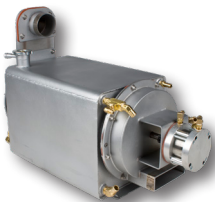
Nanotech ceramic-coated exhaust plus cogeneration heat exchange deliver amazing temperature consistency

Looking for the new standard for longevity and reliability in a liquid-cooled power plant?

NEW Cerakote ceramic coating on all Apex 570 exhaust components lowers the exhaust temperature inside your van. That minimizes heat-related issues and promises a longer life for your truckmount!



HELICAL ROTORS



HEAT EXCHANGER

Powered by a 31 HP Kubota gas engine, the Apex 570 uses the Sapphire Scientific patented thermal well system to capture maximum heat for cleaning, while its ceramic-coated exhaust system keeps components cooler, reducing maintenance and keeping you on the job making money.

NEW!



NEW FEATURES

FOR CURRENT APEX OWNERS:

- » **HELICAL TRI-LOBE HF 408 BLOWER** is quieter and produces less vibration
- » **THROUGH-FRAME DRIVE BELT COOLING** significantly reduces downtime by extending belt life.
- » **INCREASED CLEANING POWER** – 1500 PSI and 5 GPM at 1500 RPM for hard surface cleaning
- » **HIGHER BLOWER CFM** ensures better dry times

POWER PLANT	Kubota WG972 31 HP liquid-cooled cast iron gasoline engine operating at 3000 RPM
VACUUM PUMP	Gardner Denver HeliFlow® 408 helical blower. Vacuum at 13 in. and flows up to 455 CFM
SOLUTION PUMP	General HTS2016S producing up to 1500 PSI and 5 GPM at 1500 RPM.
WASTE TANK	90 gal. marine grade aluminum Optional: 120 gal. high capacity waste tank
FRAME CONST.	Powder-coated aluminum
CONSOLE (W x H x D)	22 x 43 x 50 in. 56 x 109 x 127 cm

LEGEND BRANDS CLEANING TRUCKMOUNTS
INCLUDE EVERYTHING YOU NEED TO GET TO WORK:

Visit www.legendbrandscleaning.com for details.
Serviced by North America's largest dealer network.